



DPS 50

► Specifications

Genset model

Rated speed	rpm	1800
Net Frequency	Hz	60
Rated voltage 3 phases	V	480/277
Rated apparent power (PRP) 3 phases	kVA	49
Rated apparent power (LTP) 3 phases	kVA	52
Nominal current (LTP) 400V - 3 phases	A	62,67

Engine

Make		DEUTZ
Model		BF4M2011
Exhaust Emission Standard	Stage	II
Rated PRP gross power	kW	45,0
Rated LTP gross power	kW	47,3
Cooling system		oil
Speed governing		mecanical
Governing Standard		G2
Number of cylinders		4
Engine configuration		IL
Displacement	ltr	3,11
Bore/Stroke	mm	94/112
Compression Ratio		18,1
Electrical equipment	V/dc	12

Air

Max. Intake depression (Switch setting)	[mbar]	20
Combustion Air Volumne	[m³/h]	168

Exhaust System

Max. exhaust Gas Temperature	[C°]	611
Max. Exhaust back pressure	[mbar]	30
Exhaust Gas Flow (at above temperature)	[m³/h]	468

Cooling System

Standard Cooling System		
Fan Power Consumption	[kW]	1
Cooling Air Flow	[m³/h]	2370
Air Pressure Loss	[mbar]	1,5
Heat dissipation (convection)	[kW]	-

Lube Oil System

Lube Oil Capacity (Slump)	[LTR]	10
Min Oil Pressure (Shutdown)	[bar]	1,5

Fuel Consumption

25% Load	263	[g/kWh]	3,2	[LTR/Hour]
50% Load	227	[g/kWh]	5,6	[LTR/Hour]
75% Load	230	[g/kWh]	8,4	[LTR/Hour]
100% Load	241	[g/kWh]	11,6	[LTR/Hour]
Fuel Filter	Spin-on Fuel Filter			
Optional	Pre-Filter w/ Water Separator			

Noise Level (Open / Canopy)

Sound pressure - 100% load, 7m average	dB(A)	67
--	-------	----

Generator

Make	Mecc Alte		
Model	ECP32 3S4B		
Generator efficiency	%	91,5	

Controller






DEUTZ MODEL DESCRIPTION

CLASSIC BASIC COMFORT DELUXE

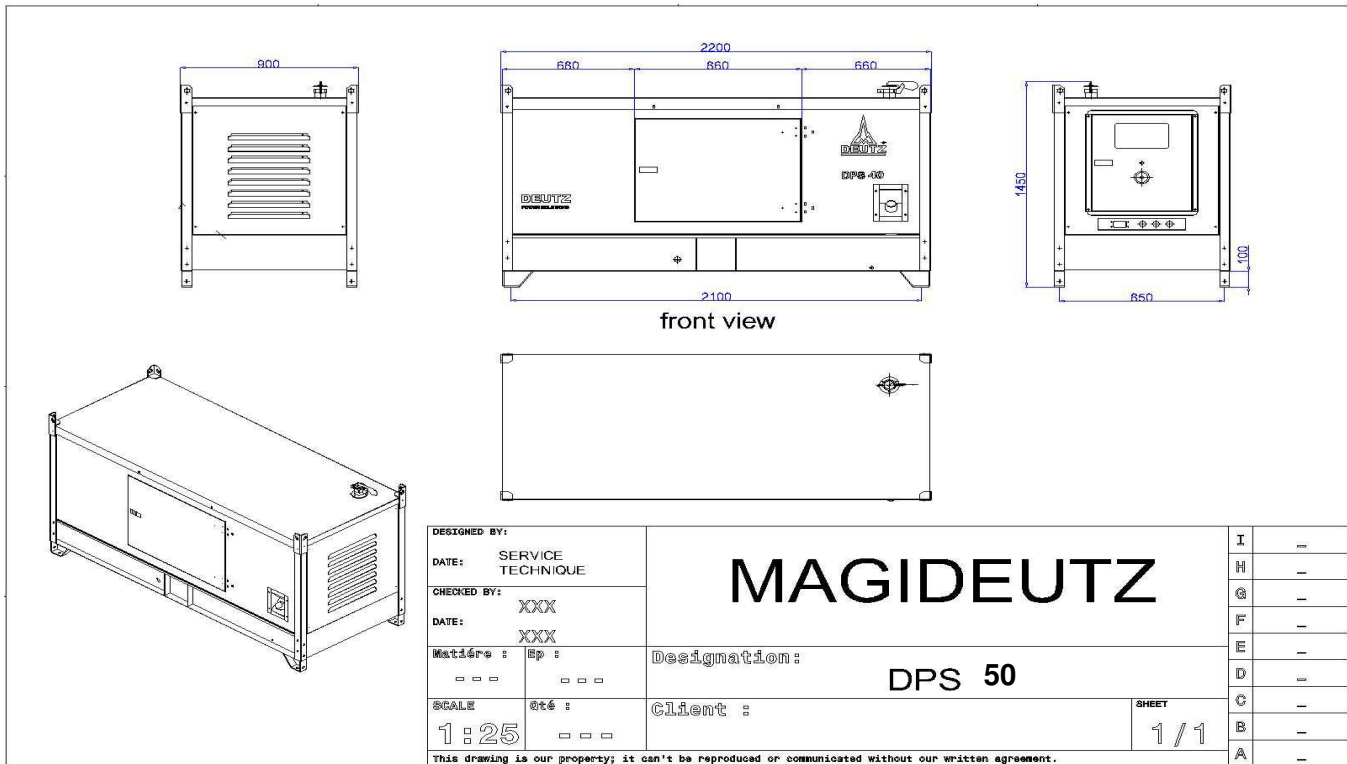
FEATURES

FEATURES	CLASSIC	BASIC	COMFORT	DELUXE
Binary Inputs / Outputs	6/6	4/6	7/7	8/8
Analog Inputs	3	3	3	4
Input & Output Configurations	✓	✓	✓	✓
D+ battery charging alternator circuit	✓	✓	✓	✓
Generator protections	✓	✓	✓	✓
AMF / MRS Functions	✓	✓	✓	✓
GCB/MCB Control with Feedback	✓	without feedback	✓	✓
Frequency measurement Gens/Mains	✓	✓	✓	✓
ECU support via CAN	✓	✓	✓	✓
kW / kWh / kVA measurement	kVA	Kw/Kwh/kVA	Kw/Kwh/kVA	Kw/Kwh/kVA
Magnetic pickup	x	✓	✓	✓
RTC / Battery	x	x	✓	✓
Total Fuel Consumption	x	x	✓	✓
Dummy Load / Load Shedding	x	x	✓	✓
Analog Calibration	x	x	✓	✓
Auto.Temperature based on heating & cooling	x	x	✓	✓
PLC	x	x	x	✓
Modbus support / SNMP support	x	x	○	✓
SNMP traps	x	x	x	○
Remote Control	x	○	○	○
Earth fault current protections	x	x	○	○
Manual Speed Control (For ECU Engines)	x	x	x	✓
2 x 10 A binary output for cranking and fuel solenoid	x	x	x	✓
Fuel pump	x	x	x	✓
Connection type autodetect	x	x	x	✓
TIER 4 Final Support	x	x	x	✓

-  Included
-  Excluded
-  Optional - Plug in



Weight and dimensions		Open	Canopy
Weight	kg	620	1060
Length	mm	1500	2200
Width	mm	830	900
Height	mm	1350	1450
Fuel tank capacity (option)		ltr	75



Cowling and soundproofing: According to international standards

- The inner walls of the cowling: pulverized antiresonant material
- Doors and hatches: Sealed with rubber and foam joint resists heat
- All steel supports: sandblasted and degreased covered:

* A first layer of epoxides

* Two coats of synthetic paints

Coupling

The engine and alternator are coupled together and form a single piece by a semi elastic device.

The coupling system is specially designed piece, flywheel housing.

The system provides constant perfect alignment and allow a simple and easy maintenance

Chassis

The frame is steel, generously sized, fully welded to the arc and absolutely rigid to support the complete generator with all accessories, coupled to the generator. Electrically welded which will be installed the engine and alternator through the insulating elastic soles vibration fixed with galvanized bolts and washers.

The motor generator will be rigidly fixed flanges with a piece of semi elastic coupling

Painting

The painting is of high quality and made of metalized

2 primer and 2 topcoats for all components and

accessories of the generator.

مؤسسة شذى نجد للتجارة

الموزع العام لمولدات دويتز الألمانية في المملكة العربية السعودية واليمن والعراق
المملكة العربية السعودية الرياض هاتف: 0114816587 فاكس: 0114816096

www.shatha.org

