



**DEUTZ POWER SOLUTION**



## ► Specifications

<b>Genset model</b>		
Rated speed	rpm	1500
Net Frequency	Hz	50
Rated voltage 3 phases	V	400/230
Rated apparent power (PRP) 3 phases	kVA	650
Rated apparent power (LTP) 3 phases	kVA	712
Nominal current (LTP) 400V - 3 phases	A	1028,00
<b>Engine</b>		
Make		MTU
Model		12V1600G20F
Exhaust Emission Standard	Stage	TAL 2000/Stage 2
Rated PRP gross power	kW el	520,0
Rated LTP gross power	kW el	570,0
Cooling system		water
Speed governing		electronical
Governing Standard		G2
Number of cylinders		12
Engine configuration		V
Displacement	ltr	1,75
Bore/Stroke	mm	122/150
Compression Ratio		17,5
Electrical equipment	V/dc	24
<b>Air</b>		
Max. Intake depression ( Switch setting )	[mbar]	50
Combustion Air Volumne	[m³/s]	0,6
<b>Exhaust System</b>		
Max. exhaust Gas Temperature	[C°]	482
Max. Exhaust back pressure	[mbar]	150
Exhaust Gas Flow (at above temperature)	[m³/h]	90
<b>Cooling System</b>		
Standard Cooling System		
Fan Power Consumption	[kW]	34
Cooling Air Flow	[m³/h]	803
Air Pressure Loss	[mbar]	1000
Heat dissipation (convection)	[kW]	225
<b>Lube Oil System</b>		
Lube Oil Capacity (Slump)	[bar]	2,6
Min Oil Pressure ( Shutdown)	[bar]	2,4

## Fuel Consumption

25% Load	224 [g/kWh]	37	[LTR/Hour]
50% Load	211 [g/kWh]	70	[LTR/Hour]
75% Load	206 [g/kWh]	102	[LTR/Hour]
100% Load	205 [g/kWh]	135	[LTR/Hour]
Fuel Filter	Spin-on Fuel Filter		
Optional	Pre-Filter w/ Water Separator		

## Noise Level ( Open / Canopy )

Sound pressure - 100% load, 7m average	dB(A)	75
--	-------	----




## Generator

Make	Mecc Alte		
Model	ECO40-2L4A		
Generator efficiency	%	94	

## Controller



DEUTZ MODEL DESCRIPTION	CLASSIC	BASIC	COMFORT	DELUXE
<b>FEATURES</b>				
Binary Inputs / Outputs	6/6	4/6	7/7	8/8
Analog Inputs	3	3	3	4
Input & Output Configurations	✓	✓	✓	✓
D+ battery charging alternator circuit	✓	✓	✓	✓
Generator protections	✓	✓	✓	✓
AMF / MRS Functions	✓	✓	✓	✓
GCB/MCB Control with Feedback	✓	without feedback	✓	✓
Frequency measurement Gens/Mains	✓	✓	✓	✓
ECU support via CAN	✓	✓	✓	✓
kW / kWh / kVA measurement	kVA	Kw/Kwh/kVA	Kw/Kwh/kVA	Kw/Kwh/kVA
Magnetic pickup	x	✓	✓	✓
RTC / Battery	x	x	✓	✓
Total Fuel Consumption	x	x	✓	✓
Dummy Load / Load Shedding	x	x	✓	✓
Analog Calibration	x	x	✓	✓
Auto.Temperature based on heating & cooling	x	x	✓	✓
PLC	x	x	x	✓
Modbus support / SNMP support	x	x	○	✓
SNMP traps	x	x	x	○
Remote Control	x	○	○	○
Earth fault current protections	x	x	○	○
Manual Speed Control (For ECU Engines)	x	x	x	✓
2 x 10 A binary output for cranking and fuel solenoid	x	x	x	✓
Fuel pump	x	x	x	✓
Connection type autodetect	x	x	x	✓
TIER 4 Final Support	x	x	x	✓

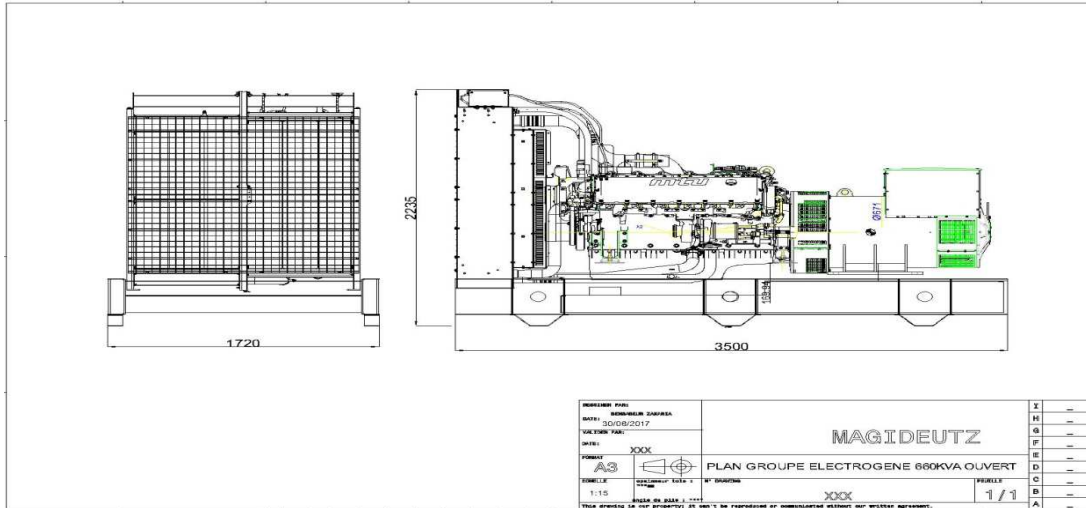
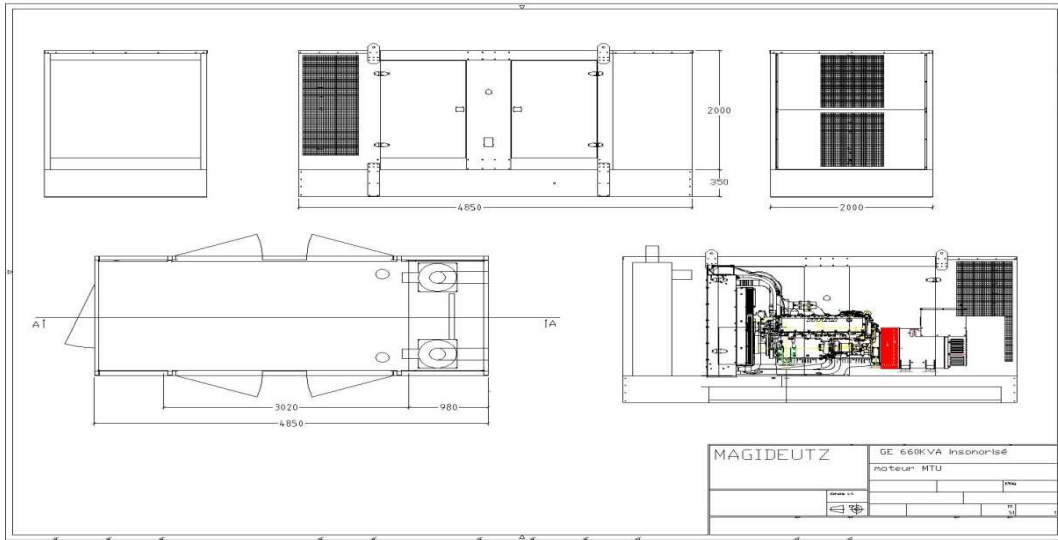
-  Included
-  Excluded
-  Optional - Plug in



## Weight and dimensions

Open Canopy

Weight	kg	4 600	6 000
Length	mm	3 500	4 850
Width	mm	1 720	2 000
Height	mm	2 235	2 350
<b>Fuel tank capacity (option)</b>	ltr	1 000	550



#### **Cowling and soundproofing:** According to international standards

- The inner walls of the cowling: pulverized antiresonant material
- Doors and hatches: Sealed with rubber and foam joint resists heat
- All steel supports: sandblasted and degreased covered:

- \* A first layer of epoxides
- \* Two coats of synthetic paints

#### **Coupling**

The engine and alternator are coupled together and form a single piece by a semi elastic device. The coupling system is specially designed piece, flywheel housing. The system provides constant perfect alignment and allow a simple and easy maintenance

#### **Chassis**

The frame is steel, generously sized, fully welded to the arc and absolutely rigid to support the complete generator with all accessories, coupled to the generator. Electrically welded which will be installed the engine and alternator through the insulating elastic soles vibration fixed with galvanized bolts and washers. The motor generator will be rigidly fixed flanges with a piece of semi elastic coupling

#### **Painting**

The painting is of high quality and made of metalized 2 primer and 2 topcoats for all components and accessories of the generator.

