



DPS 380

► Specifications

Genset model

Rated speed	rpm	1500
Net Frequency	Hz	50
Rated voltage 3 phases	V	400/230
Rated apparent power (PRP) 3 phases	kVA	388
Rated apparent power (LTP) 3 phases	kVA	420
Nominal current (LTP) 400V - 3 phases	A	606,28

Engine

Make		DEUTZ
Model		BF6M1015CP
Exhaust Emission Standard	Stage	II
Rated PRP gross power	kW	338,0
Rated LTP gross power	kW	365,0
Cooling system		water
Speed governing		electronic
Governing Standard		G2
Number of cylinders		6
Engine configuration		V
Displacement	ltr	11,91
Bore/Stroke	mm	132/145
Compression Ratio		16,5
Electrical equipment	V/dc	24

Air

Max. Intake depression (Switch setting)	[mbar]	50
Combustion Air Volumne	[m³/h]	1478

Exhaust System

Max. exhaust Gas Temperature	[C°]	555
Max. Exhaust back pressure	[mbar]	50
Exhaust Gas Flow (at above temperature)	[m³/h]	4273

Cooling System

Standard Cooling System		
Fan Power Consumption	[kW]	10,7
Cooling Air Flow	[m³/h]	24120
Air Pressure Loss	[mbar]	1,5
Heat dissipation (convection)	[kW]	30

Lube Oil System

Lube Oil Capacity (Slump)	[LTR]	34
Min Oil Pressure (Shutdown)	[bar]	2,7

Fuel Consumption

25% Load	216 [g/kWh]	23,6	[LTR/Hour]
50% Load	207 [g/kWh]	45,2	[LTR/Hour]
75% Load	208 [g/kWh]	68,1	[LTR/Hour]
100% Load	216 [g/kWh]	94,3	[LTR/Hour]

Fuel Filter Spin-on Fuel Filter

Optional Pre-Filter w/ Water Separator

Noise Level (Open / Canopy)

Sound pressure - 100% load, 7m average dBA 67

Generator

Make Mecc Alte

Model ECO40 1S4A

Generator efficiency % 94,2




Controller



DEUTZ MODEL DESCRIPTION	CLASSIC	BASIC	COMFORT	DELUXE
-------------------------	---------	-------	---------	--------

FEATURES

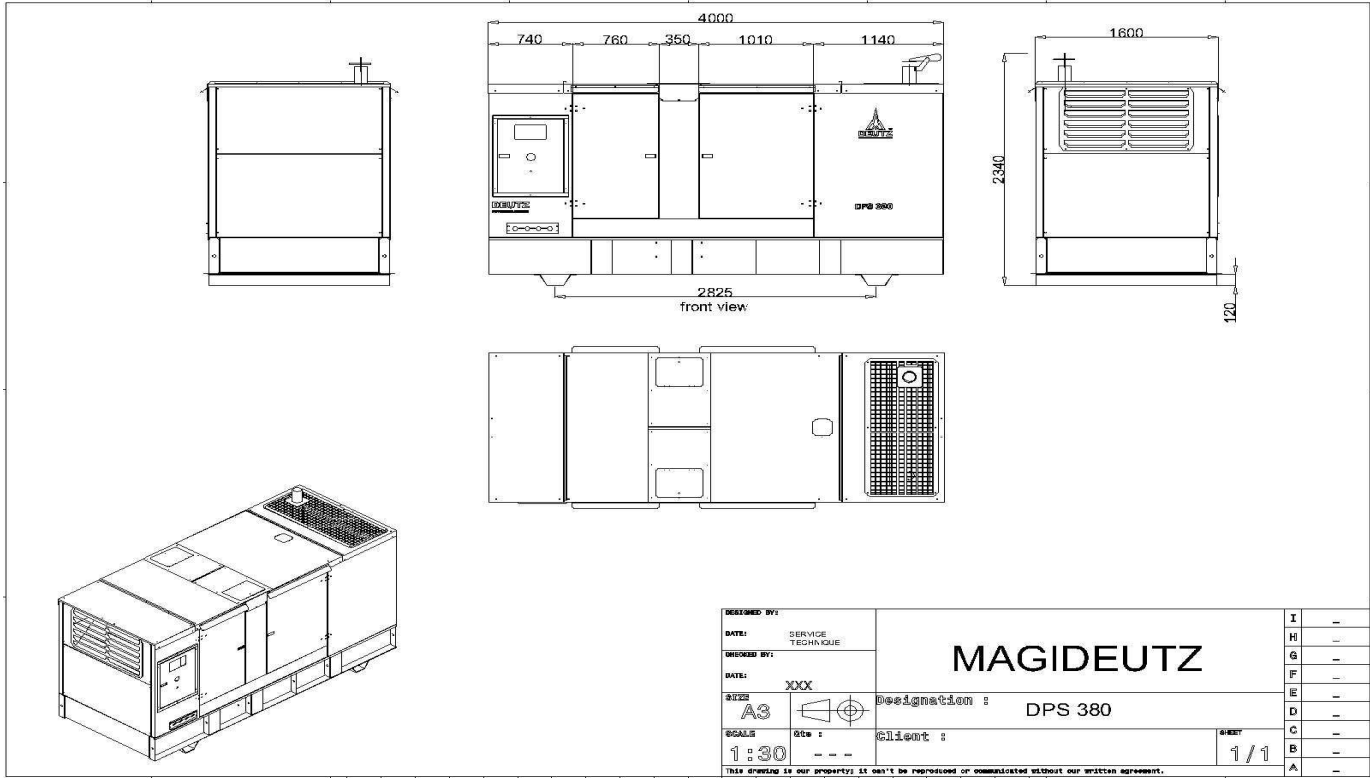
Binary Inputs / Outputs	6/6	4/6	7/7	8/8
Analog Inputs	3	3	3	4
Input & Output Configurations	✓	✓	✓	✓
D+ battery charging alternator circuit	✓	✓	✓	✓
Generator protections	✓	✓	✓	✓
AMF / MRS Functions	✓	✓	✓	✓
GCB/MCB Control with Feedback	✓	without feedback	✓	✓
Frequency measurement Gens/Mains	✓	✓	✓	✓
ECU support via CAN	✓	✓	✓	✓
kW / kWh / kVA measurement	kVA	Kw/Kwh/kVA	Kw/Kwh/kVA	Kw/Kwh/kVA
Magnetic pickup	x	✓	✓	✓
RTC / Battery	x	x	✓	✓
Total Fuel Consumption	x	x	✓	✓
Dummy Load / Load Shedding	x	x	✓	✓
Analog Calibration	x	x	✓	✓
Auto.Temperature based on heating & cooling	x	x	✓	✓
PLC	x	x	x	✓
Modbus support / SNMP support	x	x	○	✓
SNMP traps	x	x	x	○
Remote Control	x	○	○	○
Earth fault current protections	x	x	○	○
Manual Speed Control (For ECU Engines)	x	x	x	✓
2 x 10 A binary output for cranking and fuel solenoid	x	x	x	✓
Fuel pump	x	x	x	✓
Connection type autodetect	x	x	x	✓
TIER 4 Final Support	x	x	x	✓

-  Included
-  Excluded
-  Optional - Plug in



Weight and dimensions

		Open	Canopy
Weight	kg	2600	3620
Length	mm	3000	4000
Width	mm	1700	1600
Height	mm	2200	2340
Fuel tank capacity (option)	ltr	600	395



DESIGNED BY:		MAGIDEUTZ	I	-
DATE:	SERVICE TECHNIQUE		H	-
DRAWN BY:		Designation : DPS 380	G	-
DATE:	XXX		F	-
SIZE:	A3	Client :	D	-
SCALE:	1:30		C	-
THIS DRAWING IS OUR PROPERTY. IT CAN'T BE REPRODUCED OR COMMERCIALIZED WITHOUT OUR WRITTEN AGREEMENT.		SHEET	B	-
		1 / 1	A	-

Cowling and soundproofing: According to international standards

- The inner walls of the cowling: pulverized antiresonant material
- Doors and hatches: Sealed with rubber and foam join resists heat
- All steel supports: sandblasted and degreased covered:
 - * A first layer of epoxides
 - * Two coats of synthetic paints

Coupling

The engine and alternator are coupled together and form a single piece by a semi elastic device. The coupling system is specially designed piece, flywheel housing. The system provides constant perfect alignment and allow a simple and easy maintenance

Chassis

The frame is steel, generously sized, fully welded to the arc and absolutely rigid to support the complete generator with all accessories, coupled to the generator. Electrically welded which will be installed the engine and alternator through the insulating elastic soles vibration fixed with galvanized bolts and washers. The motor generator will be rigidly fixed flanges with a piece of semi elastic coupling

Painting

The painting is of high quality and made of metalized 2 primer and 2 topcoats for all components and accessories of the generator.

مؤسسة شذى نجد للتجارة

الموزع العام لمولدات دويتز الألمانية في المملكة العربية السعودية واليمن والعراق
 المملكة العربية السعودية الرياض هاتف: 0114816587 فاكس: 0114816096
www.shatha.org